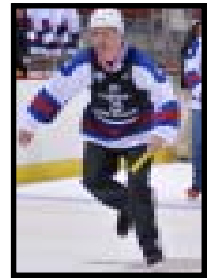


LAKE PLACID WINTER OLYMPIC CHALLENGE & GOLD MEDAL GAMES



WHITEFACE
LAKE PLACID



NYS OLYMPIC REGIONAL DEVELOPMENT AUTHORITY



Winter Olympic CHALLENGE

The Winter Olympic Challenge, a joint effort between the United States Olympic Committee and the NYS Olympic Regional Development Authority is a unique opportunity to experience Winter sports firsthand. Participants have the chance to speed down the new combined sliding track at the Olympic Sports Complex and experience the “Champagne of Thrills”; race slalom gates at Whiteface Mountain where Phil Mahre won Olympic silver; skate laps around the Olympic Speed Skating Oval, site of Eric Heiden’s five gold medals; shoot pucks and skate on the 1980 Rink- Herb Brooks Arena, site of the historic “Miracle on Ice”; and much more.

There is no better location for this action-packed Olympic style fantasy experience than Lake Placid, NY, “The Winter Sports Capital of the World.” Host to the 1932 and 1980 Olympic Winter Games this world-renowned village is also the home to one of three United States Olympic Training Centers, bringing world-class training and competition to the area.

With the majestic Adirondack Mountains and the Olympic Village of Lake Placid as the backdrop, guests will experience the thrill of a full program of winter sports, interactive activities and Adirondack hospitality.

The program hosts corporations and special groups interested in promoting principals such as preparation, teamwork and accomplishment. Whether the challenge is designed by the company as an employee incentive program or used to entertain clients, it is the ideal forum for bonding and encouraging a sense of personal achievement.

Skills will be developed and polished with the help of world-class coaches—past, present and future Olympians.

Challenge guests will be timed and scored individually and tallied for their respective teams in their daily activities. On the closing evening of the action-packed event, gold, silver and bronze medals will be awarded to the competing teams. As a non-competitive experience, participants have the opportunity to stroll down Main Street and visit the many alpine boutiques and Adirondack shops, relax in the spa facilities or enjoy a spectacular demonstration in ski jumping and freestyle aerial skiing at the Olympic Jumping Complex.



NYS OLYMPIC REGIONAL DEVELOPMENT AUTHORITY



Winter Olympic CHALLENGE

SAMPLE 4 DAY/3 NIGHT SCHEDULE

Day One -

- Arrive and check-in. Guests will be met at Albany Airport and arrive in Lake Placid via motorcoach, van or Chevrolet Suburbans/Tahoes. Guests, now known as athletes, will immediately go through credential processing, pick up information for the weekend, go through ski sizing & boot fitting, receive their welcome gifts and get their official welcome and event briefing, detailing the flow of the entire weekend!
- Early arriving guests will have full access for alpine skiing, cross-country skiing, skating and other activities.
- Opening ceremonies: Ice Bar, dog sled rides, horse drawn sleigh rides, Cauldron Lighting, and Fireworks!
- Welcome dinner offered at one of Lake Placid's many dining experiences that will please any palate.

Day Two -

- Breakfast at lodging property with athlete presentations
- Athletes depart via motorcoach for the Olympic Sports Complex where they will compete as teams in the sports of bobsled, luge or skeleton, snowshoe relay race and biathlon.
- Following the competition we're off to the Olympic Jumping Complex for a tour of the facility. On arrival at the base of the ski jumps, we will tour the Freestyle Aerial Park before taking the chair lift and glass-enclosed elevator to the top of the 120 meter tower with panoramic views of Lake Placid and the High Peaks. You will enjoy a live demonstration from our local ski jump athletes jumping off the 90m hill.
- Lunch at a Lake Placid eatery of your choosing.
- Following lunch we're heading for the Olympic Center and the famed 1980 Rink Herb Brooks Arena, site of the "Miracle on Ice". Walking out onto the most famous sheet of ice for our own "miracle", thoughts will go back to the USA hockey team's defeat of the mighty Russians on their way to winning gold in what Sports Illustrated named the sporting event of the century. Athletes will compete against each other in Hockey Skills and Curling, athletes will also be encouraged to skate. To end the first day of competition teams will compete in a short track Speed Skating relay race!
- Cocktails, dinner and the Vancouver Olympic Winter Games viewing party





Winter Olympic CHALLENGE

SAMPLE 4 DAY/3 NIGHT SCHEDULE

Day Three

- Breakfast at lodging property with athlete presentation
- Athletes depart via motorcoach for Whiteface the Olympic Mountain for a day of alpine skiing or snowboarding (rentals and lessons provided). Guided snowshoeing will also be available.
- Later in the morning a recreational ski/snowboard race for all abilities will be conducted. Beginners and "never-evers" will compete on the Mixing Bowl trail while the intermediates and experts will schuss down our race course on the Lower Valley trail.
- Lunch at location to be determined
- Athletes will be able to enjoy a quiet afternoon in the woods on nordic skis at the Olympic Sports Complex – Cross Country Center (optional) or have the afternoon for free time to relax and enjoy the quaint village of Lake Placid or take advantage of the many spa services to heal those aches and pains of competition
- Closing ceremony (cocktail reception, dinner, motivational speaker, awards and video presentation) Thrill of victory or agony of defeat? You will tell us. We'll re-cap the past 3 days with a video highlight show, awards ceremony and result book distribution.

Day Four

- Breakfast at lodging property
- Departures

The Winter Olympic Challenge program will encourage participation, camaraderie, and in the case of many, a better understanding of what it takes to be a competitor. Our professional staff as well as Olympic and National caliber athletes will be there to guide you through the entire activity. Athletes will leave Lake Placid with a sense of accomplishment, a better appreciation of what it takes to be an Olympic athlete and motivated to return to the workplace!





Winter Olympic CHALLENGE

Program Cost - \$2,750.00 per person and up (estimate based on a min. guarantee of 60 people)

Program Cost Includes-

Round trip motorcoach or Van/Suburban/Tahoe ground transportation

Albany County Airport in Albany, NY or Trudeau Airport in Montreal, PQ to Lake Placid and return

3 nights stay at a full service resort lodging property in Lake Placid - Accommodations will be at a three or four star resort in Lake Placid based on availability. The final decision on the lodging property will be at the discretion of the host company. There will be an additional charge for single rooms or suites. ORDA will assign hotel rooms based on availability at the time of booking. Hotel taxes, resort fees and gratuities are included.

All meals and beverages - 3 breakfasts, 3 lunches, 3 dinners. Meal taxes and gratuities are included.

Hospitality - A hospitality suite will be arranged at your lodging property offering daily hors d'oeuvres and beverages. Hospitality will also be offered at all of scheduled activities throughout the day.

Gift bag and nightly turn down gifts - High Sierra duffel bag or back pack, shell ski jacket & pants, gloves, winter hat, ski goggles, turtleneck, ski socks, fleece vest or jacket, and 1980 Olympic USA Hockey replica jersey. Turn down gifts: Adirondack chocolates, maple syrup and balsam pillow.

Opening Ceremonies - ice bar, dog sled rides, horse drawn sleigh rides, cauldron lighting and fireworks.

All Activities and Equipment Usage - Full-day of skiing, ski rentals and lessons, bobsled, skeleton and/or luge ride, biathlon target shooting, ski jumping and/or freestyle aerial demonstrations, hockey, curling, skating and speed skating relay race, ice skate rentals, coaching, timing, results, daily awards, pins and medals.

Athlete appearances - Olympic Athletes to speak at dinners as well as coach you daily through each activity

Highlight Video and Action Photographs - A DVD copy of the video will be available upon departure. Our in-house photographer will capture your event and offer a variety of commemorative photographs for your guests.

PROGRAM PRICE DOES NOT INCLUDE - Air transportation, room service, refreshments other than those provided at meals, at the hospitality center and during your scheduled activities.

The right is reserved to substitute or change hotels, and alter schedules as situations warrant.

The Olympic Regional Development Authority reserves the right to resell Winter Olympic Challenge space without notice if deposit or final payment are not received by the dates outlined on the payment schedule.



NYS OLYMPIC REGIONAL DEVELOPMENT AUTHORITY

LAKE PLACID GOLD Medal GAMES

Since its inception ORDA has been on a mission to preserve the legacy of the Olympic Winter Games. We are committed to Lake Placid's state-of-the-art sports complexes and supporting the athletes that use them. An important part of our mission is to make our sports facilities available to anyone interested in learning about, or actively participating in winter sports.

The Gold Medal Games provide the exhilarating embodiment of these ideals. We combine participation in pulse-raising sports such as bobsledding, luge, skeleton, ice hockey, skiing, snowboarding and biathlon into a series of corporate games that foster team building and camaraderie. We can incorporate your company business meetings with Games scheduling, opening ceremonies, venue access, coaching, sports equipment, video taping or photo slideshows, printed results and awards ceremonies with medals.



Involving your company in these Games will give you a new perspective on how teams are built, how skills are learned and how interaction in the workplace can be enhanced. Have your team "Go for the Gold" while engaged in the world of winter sports.





SAMPLE 3 DAY/2 NIGHT SCHEDULE

Day One

- Arrival, check-in at the Resort Lodging Property Lobby, and accreditation
- Early arriving guests will have full access to the Resort Lodging Property amenities.
- Any spa treatments or shopping will be at an additional expense to the guest.

5:30pm Board motor coaches for transport to the Olympic Jumping Complex
 5:45pm – 6:45pm Cocktail reception, Nordic Jumping exhibition, chairlift & elevator ride to the top of 120M tower, Freestyle Aerials exhibition at the Freestyle Pool.
 6:45pm – 7:00pm Board motor coaches for transport to dining destination
 7:15pm – 8:45pm Buffet BBQ dinner
 8:45pm-9:30pm Opening Ceremony, Torch Run and Cauldron Lighting, bon fires & s'mores.
 9:30pm Transport back to Resort Lodging Property

Day Two

7:00am – 8:00am Buffet Breakfast at your leisure at the Resort Lodging Property
 8:00am – 10:15am Meetings at the Resort Lodging Property or one of our Olympic venues
 10:15am-10:30am Morning Meeting Break (coffee, beverages, danishes & fruit)
 10:30am-12:00pm Meetings continue
 12:15pm Meet in lobby of lodging property for transport to the Olympic Sports Complex
 12:15pm -12:30pm Transport to the Olympic Sports Complex
 12:30pm - 1:15pm Lunch in the Lamy Lodge on the finish curve of the 1980 Bobsled Track
 1:15pm – 3:45pm Team competition - Bobsled & Biathlon, and Meet and Greet with current Bobsled World Champion “The Night Train’s” Steven Holcomb & Justin Olsen
 1:15-2:00pm: Lake Placid to Biathlon, Sochi to Bobsled, Vancouver to Tour
 2:00-2:45pm: Lake Placid to Tour, Sochi to Biathlon, Vancouver to Bobsled
 2:45-3:30pm: Lake Placid to Bobsled, Sochi to tour, Vancouver to Biathlon
 3:45pm – 4:00pm Transport to the Olympic Center
 4:00pm – 4:15pm Gift presented & group photo taken on the 1980 Rink-Herb Brooks Arena
 4:15pm – 6:00pm Team competition – Hockey skills and Skating on the 1980 Rink – Herb Brooks Arena, Curling on the adjacent USA Rink
 4:15 - 4:50pm: Lake Placid to Hockey, Sochi to Skating, Vancouver to Curling
 4:50 - 5:25pm: Lake Placid to Skating, Sochi to Curling, Vancouver to Hockey
 5:25 - 6:00pm: Lake Placid to Curling, Sochi to Hockey, Vancouver to Skating
 6:00pm – 6:15pm Speed Skating relay race on the 1980 Rink – Herb Brooks Arena (all teams)



LAKE PLACID
GOLD Medal GAMES

SAMPLE 3 DAY/2 NIGHT SCHEDULE

Day Two (continued)

- 6:15pm - 6:30pm Transport back to the Resort Lodging Property
- 6:30pm – 7:45pm Pick up Bobsled t-shirt, photo and gift in the Resort Lodging Property lobby
- 7:45pm – 9:30pm Cocktail reception, Dinner & individual awards Resort Lodging Property
- 9:30pm – 10:00pm Motivational Speaker - Olympic Athlete
- 10:00pm-10:15pm Results, Medal ceremony and Photos
- 10:15pm-10:25pm Highlight Slideshow

Day Three

- 7:00am – 8:00am Breakfast together at Resort Lodging Property
(Final remarks and survey distribution)
- 8:00am – 10:30am Break-out Meetings at Resort Lodging Property
- 11:00am Boxed lunch pick ups, Checkout (return surveys to the front desk and receive a special parting gift) and departures



L A K E P L A C I D
GOLD Medal GAMES

Venue Rentals

<p>OC Rinks Hall of Fame Meeting Rooms Museum Bob Run Lamy Lodge Ski Jumps</p> <p>WF Base Lodge Rooms Tents</p>	<p>Cost \$250/hour \$100/hour-\$175/2hrs- each add'l is \$75 \$100/hour-\$175/2hrs- each add'l is \$75 \$150/hr each add'l hr is \$100 Summer- \$2,500 Winter- \$3,500 (100 person max) \$300/2-hours \$500/2-hours private rental with chairlift and elevator (up to 50 people- \$7.50 each additional person up to 100 people) \$750/ 2-hours each additional hour costs \$100 Quoted as needed</p>
--	--

Activities

<p>Venue admission - Museum Venue admission - Ski Jumps Tour guide Skiing at Whiteface Ski Rentals Ski Lessons Ski race @ WF Broomball Hockey Shot & Hardest Shot Curling Speedskating race Skate Rentals Toboggan Run Biathlon Bobsled w/ timing</p> <p>Skeleton w/ timing</p> <p>Transportation</p>	<p>Cost \$5/person \$9/person (includes commemorative pin) \$65/hour \$44 to \$79/ group rate \$35/day (skis, boots, poles or snowboards & boots) there are many options available to your group please call for pricing \$10/person \$10/person, plus rink rental (see above) \$10/person, plus rink rental (see above) \$10/person, plus rink rental (see above) \$10/person, plus rink rental (see above) \$4/person \$500/ 2 hours private rental \$15/person \$80/person (bobsled ride, photo, Official Lake Placid Bobsled experience t-shirt, pin, sticker and introductory membership into the US Bobsled & Skeleton Federation) \$60/person (skeleton ride, photo, Official Lake Placid Skeleton experience t-shirt, pin, sticker and introductory membership into the US Bobsled & Skeleton Federation) Quoted as needed</p>
---	--



L A K E P L A C I D
GOLD Medal GAMES

Ceremonies

Ceremonies	Cost
Opening Ceremony- torch and cauldron lighting	\$500
Fireworks	\$4,000 (includes all proper permits)
Accreditation	\$8/credential with commemorative lanyard
Results Books / Awards	\$10/person
Lake Placid Medals	\$7/person
Delux Lake Placid Medals	\$14/person
Sound System	Quoted as needed
Hospitality w/ beer & wine soft drinks, and dry snacks	\$10/person/day
Gifts	Quoted as needed
1980 Replica USA Hockey Jersey	\$99 (with number "80" and personalized) / \$79 (personalized) / \$75 (generic)

Personnel

Personnel	Cost
Management Fee	10% of gross
Event Staff	\$125 per day
Team Leaders	\$125 per day
Athlete Speakers	Quoted as needed
Athlete Coaches	\$50- \$125/ day depending on time.
Athlete Shows	\$150/athlete & \$75/coach (1 coach and 3 athletes min.)
MC	\$250

MISC.

MISC.	Cost
Hotel	Quoted as needed
Breakfast	Quoted as needed
Lunch	Quoted as needed
Dinner	Quoted as needed
Video Show	Quoted as needed





Scoring Point Calculation



SKI/SNOWBOARD RACE - Each participant will be timed on one of two courses designed for all skiing abilities (the race course on the Lower Valley trail for beginners to experts and the Mixing Bowl trail for "never evers.") Times will be determined by averaging the times of all team members.

Team Points Awarded: 7 pts. - 1st Place 5 pts. - 2nd Place 3 pts. - 3rd Place



BOBSLED - Each sled will be timed to one hundredth of a second and recorded. The group score will be determined by averaging the times of all team member sleds. THREE people per sled plus a driver & brakeman, provided by us free of charge of course.

Team Points Awarded: 7 pts. - 1st Place 5 pts. - 2nd Place 3 pts. - 3rd Place



SKELETON - Each participant will get one run and will be timed. The group score will be determined by averaging the times of all team member sleds. (You're on your own for this ride)

Team Points Awarded: 7 pts. - 1st Place 5 pts. - 2nd Place 3 pts. - 3rd Place



LUGE - Each participant will get one run and will be timed. The group score will be determined by averaging the times of all team member sleds. (You're on your own for this ride as well)

Team Points Awarded: 7 pts. - 1st Place 5 pts. - 2nd Place 3 pts. - 3rd Place



BIATHLON - Each participant takes 5 shots. The group score will be determined by averaging the total number of hits by each team. Can you become a member of the "5-for-5" Club and receive a collectors pin as a biathlon marksman?

Team Points Awarded: 7 pts. - 1st Place 5 pts. - 2nd Place 3 pts. - 3rd Place



HOCKEY SHOT – SCORE-O - Each participant will take 5 shots on the goal cutout for points. You'll receive 10 points for shooting the puck through the center slot, 5 points for shooting the puck through the corner slots and 1 pt. for hitting the goal. Miss the goal...take another shot! The team score will be determined by averaging the total points each team scores.

Team Points Awarded: 7 pts. - 1st Place 5 pts. - 2nd Place 3 pts. - 3rd Place



HOCKEY SLAP SHOT - Each participant will take 5 shots at the goal. Our "state of the art" radar guns capture your fastest shot of the 5. The team score will be determined by averaging the total speed each team scores.

Team Points Awarded: 7 pts. - 1st Place 5 pts. - 2nd Place 3 pts. - 3rd Place



CURLING - Each participant will deliver a few practice stones and 3 stones to score. You'll receive 10 pts. for covering the Button (aka the inner circle) , 5 pts. for biting the Button, 4 pts. for the 2nd ring, 3 pts. for the 3rd ring, 2 pts. for the outer ring and 1 pt. for letting go of the stone! The team score will be determined by averaging the total points each team scores.

Team Points Awarded: 7 pts. - 1st Place 5 pts. - 2nd Place 3 pts. - 3rd Place



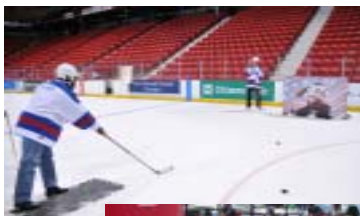
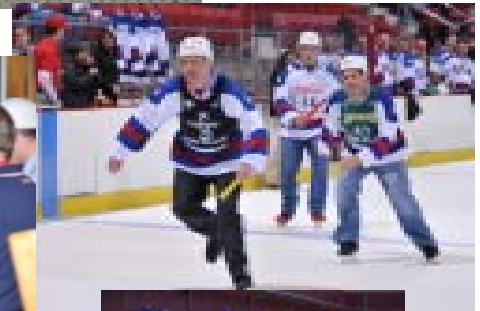
SPEED SKATING - For this event each team will pick an equal number of team members to make up a relay team. There will be one heat consisting of one lap per team member, after completing a lap team members will pass the baton to their partner within the tag zone who will continue to the start/finish line.

Team Points Awarded: 10 pts. - 1st Place 7 pts. - 2nd Place 5 pts. - 3rd Place



TOTAL POINTS - Total Points will be tallied for each team based on the number of sports you have competed in during your Gold Medal Games experience.

The final medal standing will determine the **Team Medals Awarded:** GOLD, SILVER and BRONZE



NYS OLYMPIC REGIONAL DEVELOPMENT AUTHORITY

Testimonials

Guests will leave with a sense of accomplishment from conquering activities they would have never tried. This is due to the encouragement and reinforcement by coaches, teammates and workmates. Many will want to return for more, leaving with chants and cheers in their heads, utilizing this week to move ahead and push themselves through other personal and professional challenges.

"Being able to participate in Olympic events alongside Olympic athletes makes our accounts feel like champions. The Challenge is one of the most effective hospitality programs Bausch & Lomb has encountered."

-Tom Mulhall, Bausch & Lomb



"If we rate the Challenge on a scale of 1-10, it was a 12. In my 24 years at Kodak, I simply cannot recall an event that ran so smoothly and efficiently. Your staff was simply superb. The planning was measured, the execution smooth and the follow-up complete...I ask now what the customers ask me, 'when are we going to do this again?'"

- Richard Kieffer, Eastman Kodak Company

I've never been in an atmosphere that's so positive. Every time you do something there's a group of people around you urging you on, telling you you can do it, try it, stay with it. Most of us here were trying things for the first time, and we've gained real confidence. Combine that with the team-building, and I think this is one of the greatest motivational weekends that anyone could put together. It's been a tremendous experience."

- Tom Walker, Tri-W Distributors



"The event was incredible. The landscape of Lake Placid is beautiful. It was a wonderful experience to get a better understanding of what the Olympics are all about...It was inspiring. I found the whole Olympic experience from the guest speakers to visiting the training facilities fired me up. It was motivating. Lastly, I was impressed with how well organized the event was. I am glad I was able to participate"

- Jeffrey A. Pisano, IBM



NYS OLYMPIC REGIONAL DEVELOPMENT AUTHORITY

LAKE PLACID WINTER OLYMPIC CHALLENGE / GOLD MEDAL GAMES RESERVATION FORM

Contact Person: _____

Address: _____

City: _____ State: _____ Zip: _____

Phone #: _____ e-mail: _____

of people in your group: _____ Dates of program: _____

Lodging property: _____

RESERVATIONS/DEPOSITS/FINAL PAYMENTS

Please make reservations for _____ **persons** for the Lake Placid Winter Olympic Challenge or the Gold Medal Games to be held on _____. A deposit equivalent to 50% of your program is required with the reservation. Please ensure that this form and deposit are received no later than **45 days prior to your arrival**. Balance (final payment) is due to ORDA no later than 30 days following your groups visit to Lake Placid.

Send form and deposit to: NYS Olympic Regional Development Authority
Lake Placid Winter Olympic Challenge/Gold Medal Games
2634 Main Street
Olympic Center
Lake Placid, NY 12946

CANCELLATIONS AND REFUNDS

Any cancellations should be in writing and must be received no later than 30 days prior to your arrival. A full refund is available upon approval by the NYS Olympic Regional Development Authority based on the above timeline. After 30 days the deposit becomes non-refundable.

CANCELLATION BY OLYMPIC REGIONAL DEVELOPMENT AUTHORITY

ORDA reserves the right to cancel the Lake Placid Winter Olympic Challenge for any reason. If this occurs all monies received by ORDA from program participants shall be refunded. ORDA's and the United States Olympic Committee's liability is limited to the refund of monies received.

INSURANCE

ORDA is not responsible for loss, damage, theft of luggage and/or personal injury, accidents and/or illness. For your protection it is required that you obtain adequate insurance to cover these possibilities.

Authorized Signature/Title

Date

Authorized Signature/Title

Date

Contact INFORMATION



OLYMPIC REGIONAL
NEW YORK
DEVELOPMENT AUTHORITY

*To learn more about how your company can participate in our
Corporate Programs please contact:*

Mary Catherine Spinelli

Corporate Programs Coordinator

518-302-5377 phone

518-523-8768 fax

mcspinelli@orda.org

2634 Main Street

Lake Placid, NY 12946



WHITEFACE
LAKE PLACID



NYS OLYMPIC REGIONAL DEVELOPMENT AUTHORITY