

CONDITIONS AND INFORMATION

518-523-2811

Trail Use Guidelines

1. Ski in control at all times. Do not endanger others.
2. Ski recreational loops in direction indicated ONLY.
3. Report accidents in Cross Country Lodge or call 523-2811 or 523-1176.
4. Do not litter. Carry out what you carry in.
5. No animals are permitted on the trails.
6. Be alert for grooming equipment operating on trails.

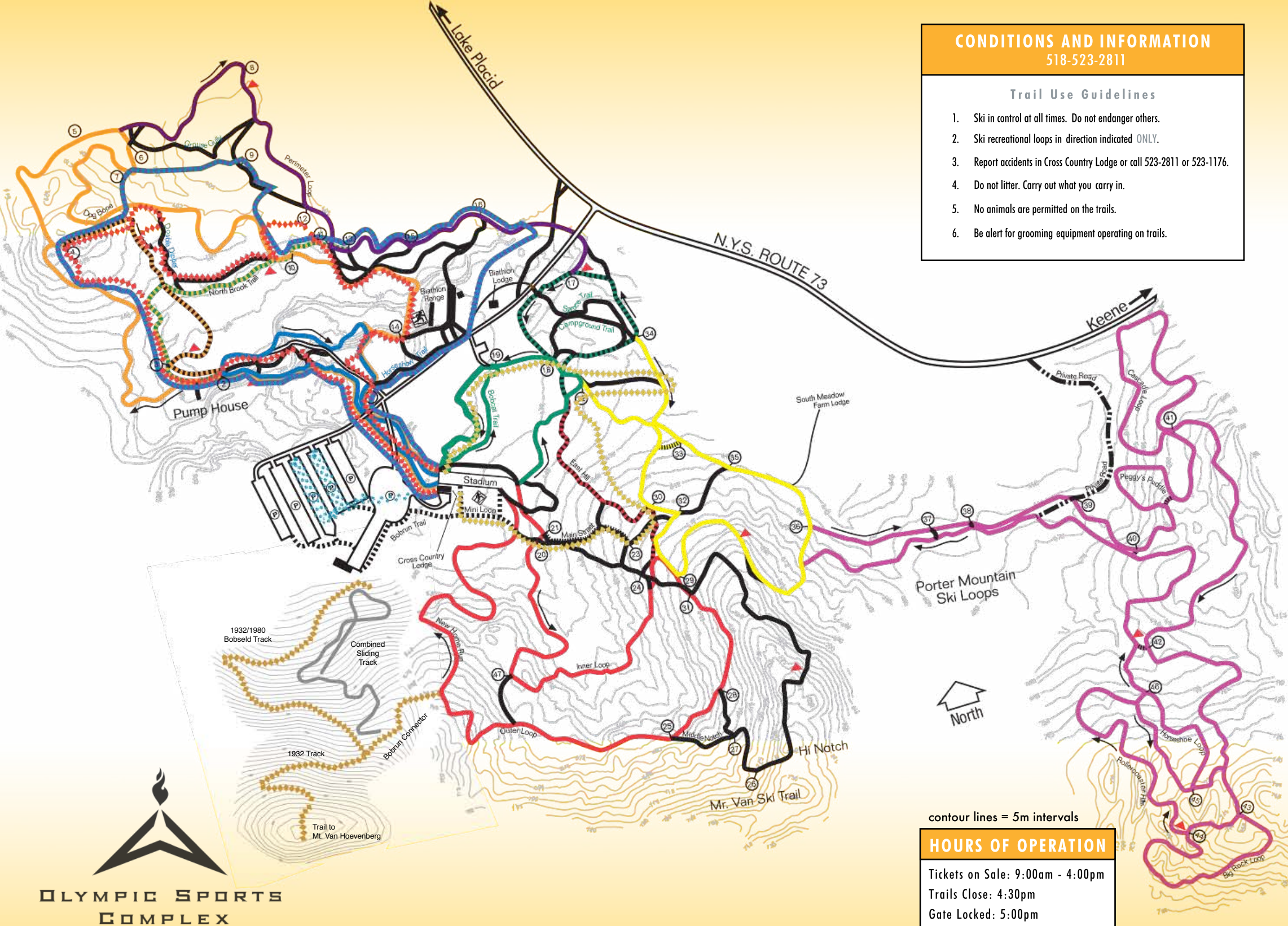
RECREATIONAL TRAILS

Recreational Loops Average Time
In order of difficulty. Loop distances start & finish at stadium.

◆◆◆	1932 & 1980 Bobsled Track Snowshoe Trail	
◆◆◆	Snowshoe Trail.....	60 min. 4km/2.5mi
◆◆◆	Snowshoe Trail.....	90 min. 5km/3.1mi
🐾	Dog Loop.....	20 min. 1.5km/.93mi
🏠	Mini Loop.....	10 min. .5km/.3mi
🐾	Bobcat Trail.....	15 min. .95km/.59mi
🏠	Flatlander Loop.....	20 min. 1.5km/.93mi
🏠	Flatlander Extension Loop.....	30 min. 2.6km/1.5mi
🏠	East Mountain Cutoff.....	35 min. 2.8km/1.7mi
🏠	North Brook Trail.....	45 min. 4km/2.5mi
🏠	InnerLoopen Trail.....	40 min. 3.6km/2.2mi
🏠	Deer Run.....	55 min. 4.9km / 3 mi
🏠	Brookside Loop.....	30 min. 2km/1.2mi
🏠	Three Trails Cutoff.....	50 min. 4.4km/2.6mi
🏠	Perimeter Loop.....	95 min. 7km/4.3mi
🏠	Three Trails Loop.....	80 min. 5.6km/3.4mi
◆	East Mountain Loop.....	60 min. 4.8km/2.9mi
◆	Ladies Olympic 5km.....	60 min. 5km loop/3.1mi
◆	Porter Mountain.....	150 min. 14.5km loop/9mi

KEY:

- 🏠 Easiest
- 🏠 More Difficult
- 🏠 Most Difficult
- 📍 Picnic Tables
- ① Junction Numbers



HOURS OF OPERATION

Tickets on Sale: 9:00am - 4:00pm
Trails Close: 4:30pm
Gate Locked: 5:00pm

OLYMPIC SPORTS
COMPLEX